



# D.W.A.I.N

- \* **DWAIN** Device Without An Interesting Name
- \* **DWAIN** simple options to measure & track tremor amplitude & frequency over time.
- \* **DWAIN** must not be used for diagnostic purposes. WARNING: Diagnosis & classification of tremor is largely subjective & arguably unreliable <sup>1)</sup>. Also see: <sup>2)</sup>

## DWAIN - Quick Start Guide:

1. [REGISTER](#) - You will receive login details via email.
2. [LOGIN](#) - Check registration was successful.
3. [HOW-TO](#) - How-to's, apps, docs & more.
4. [REFERENCE](#) - Technical reference library.

## DWAIN - Start Measuring Tremor:

1. [MEASURE](#) via **\*\*Mobile App\*\*** (DWAIN-APP).
2. [MEASURE](#) via **\*\*Web Browser\*\*** (DWAIN-WEB).
3. [MEASURE](#) via **\*\*Raspberry Pi\*\*** (DWAIN-DEV). <sup>3)</sup>

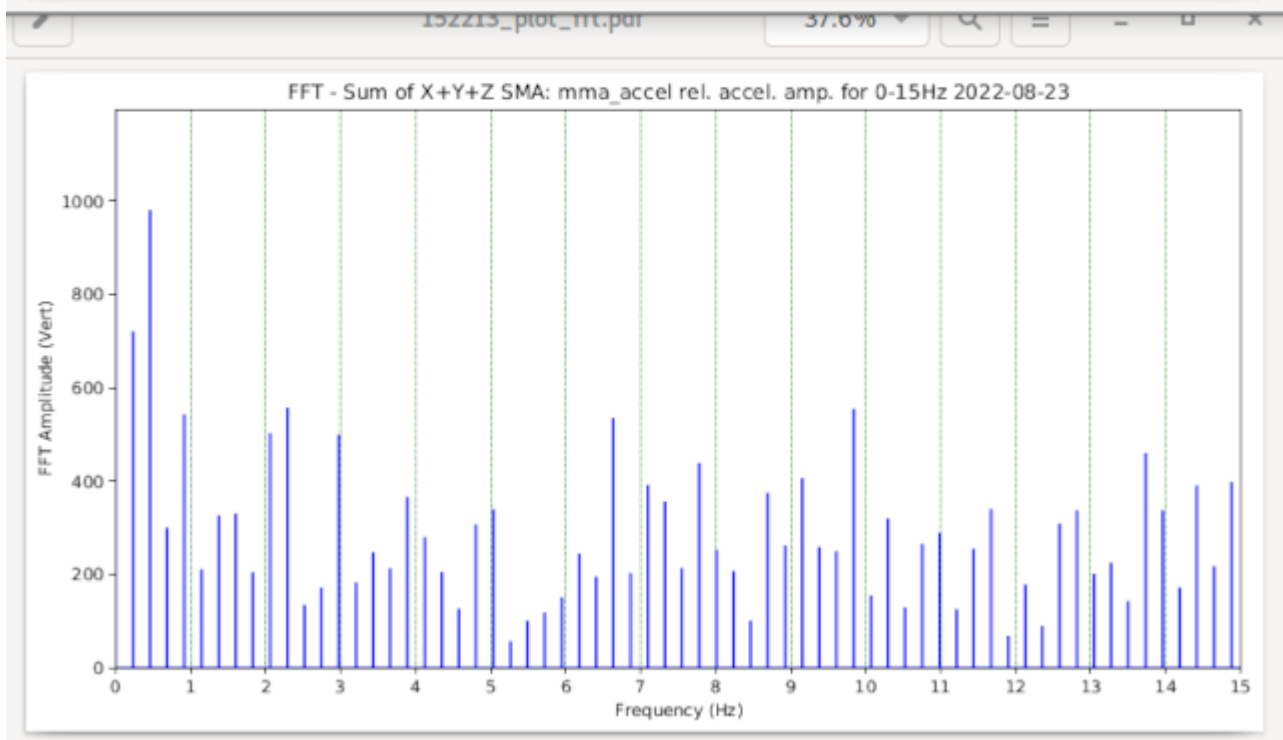
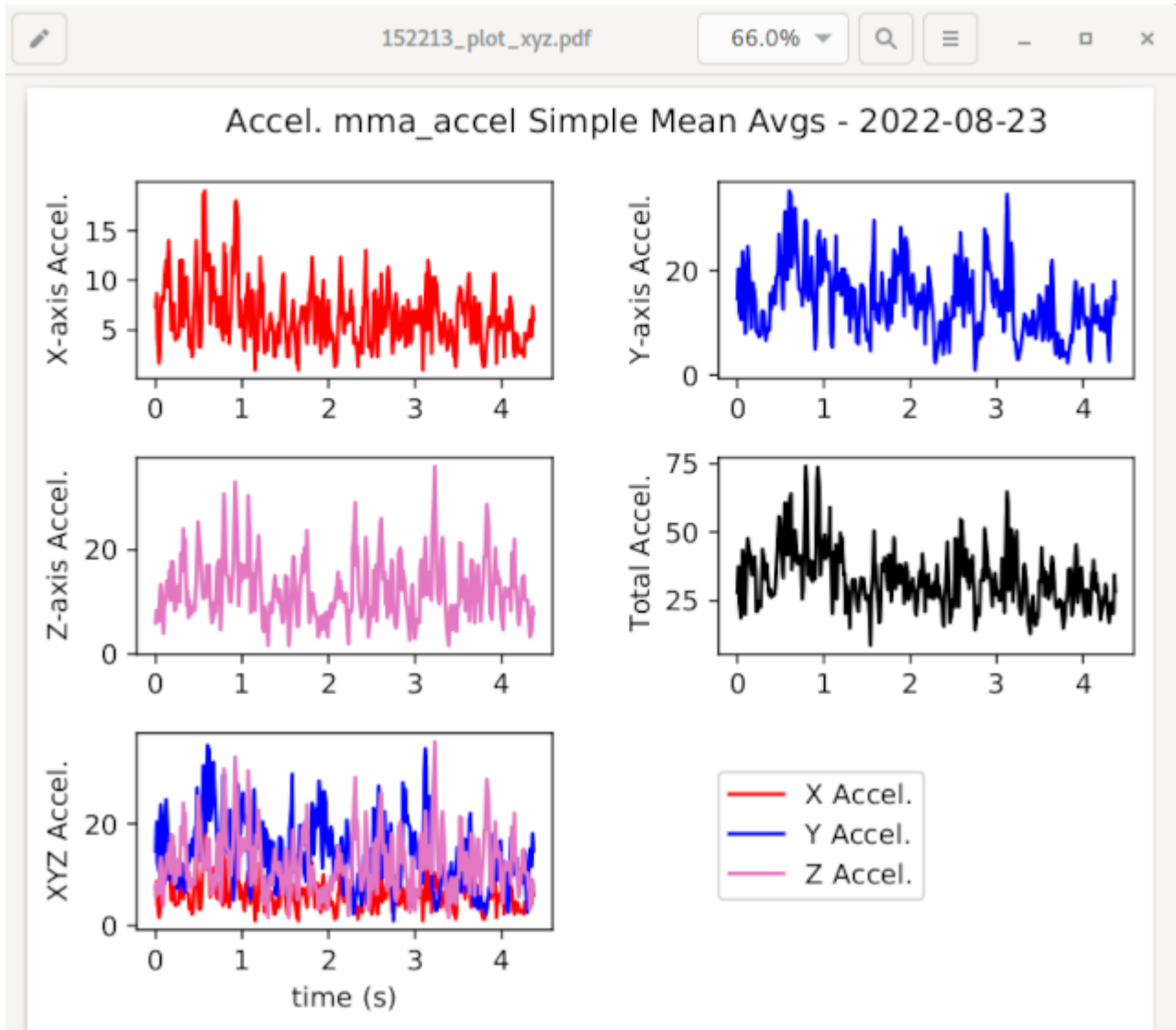
## DWAIN - Record Blood Pressure:

- [ENTER](#) blood pressure & view trends/raw data (DWAIN-WEB). <sup>4)</sup>

**Contact:** <https://dwain.scidfx.com> - E: [dwain@scidfx.com](mailto:dwain@scidfx.com)

---

## DWAIN - Example Data Output:



## References:

---

1)

[Problem of misdiagnosis](#)

2)

[PDkit - Diagnostic FOSS toolkit for PD.](#)

3)

Requires purchase of your own (low cost) [RaspberryPi device](#) and sensors.

4)

Requires purchase of your own (any)BP device.

From:

<https://dwain.scidfx.com/> - **D.W.A.I.N.**

Permanent link:

<https://dwain.scidfx.com/home>

Last update: **2023-01-08**

